



Concrete Sleepers

Engineering Certificate (1190mm Long)

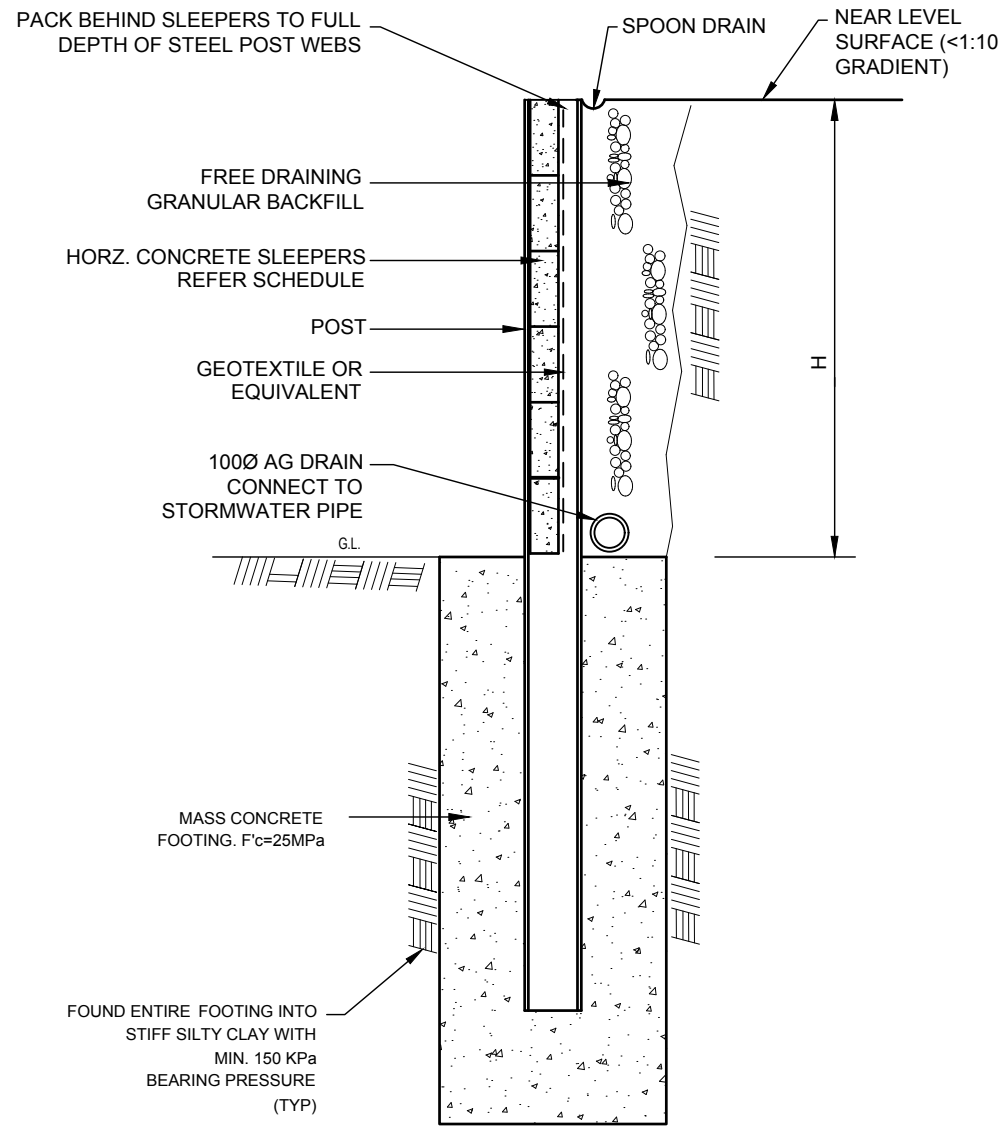
ABN 23 646 746 027

72 Officer S Rd,
Officer VIC 3809

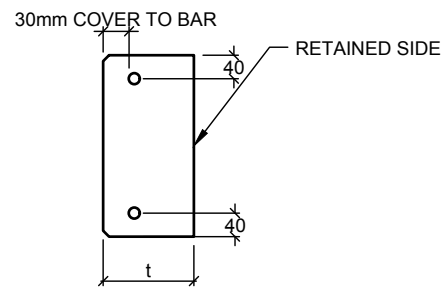
+61 410 818 242

info@sunsetsleepers.com.au

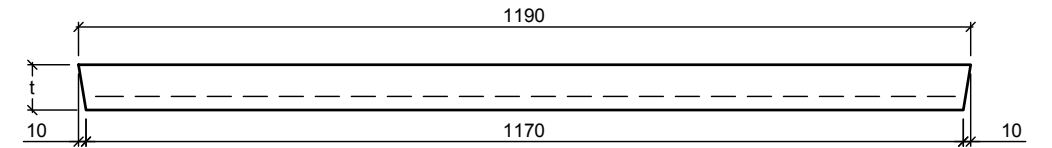
www.SunsetSleepers.com.au



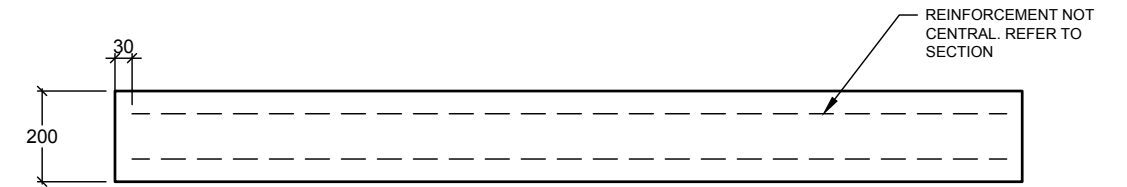
TYPICAL SLEEPER RETAINING WALL DETAIL



SECTION VIEW



PLAN VIEW



ELEVATION VIEW

REINFORCEMENT TYPES

TYPE A	EITHER: 2/N12, 3N10, 2/12mm GFRP (60GPa) OR ALSO 2/N10 USING 60MPa CONCRETE
TYPE B	EITHER: 2/N10, 2/10mm GFRP (60GPa)

SLEEPER SIZE = 1190m LONG X 200mm DEEP

WALL TYPE	THICKNESS (t)	REINFORCEMENT	SOIL RETAINED (H) 5KPa	SOIL RETAINED (H) 10KPa
1190-77-A	77mm	TYPE A	4.4m	4.0m
1190-100-A	100mm	TYPE A	6.0m	5.6m
1190-120-A	120mm	TYPE A	7.5m	7.0m
1190-77-B	77mm	TYPE B	4.0m	3.6m
1190-100-B	100mm	TYPE B	5.6m	5.0m
1190-120-B	120mm	TYPE B	7.0m	6.5m

ASSUMED SOIL PROPERTIES

SOIL DENSITY (kN/m ³)	18
Ka	0.35
INTERNAL FRICTION ANGLE	30 DEGREE

SPECIFICATIONS:

- SLEEPER CONCRETE GRADE TO BE N40. CASTING EACH SLEEPER REQUIRES RIGID FORMWORK AND CONCRETE COMPACTION IN ACCORDANCE WITH AS3600
- THESE SLEEPER WALLS SPECIFICATIONS ARE ONLY SUITABLE FOR USE WITH RETAINING WALLS WHICH SATISFY THE FOLLOWING CONDITIONS:
 - THE WALL IS NOT SUBJECT TO HEAVY SURCHARGE LOADS, THE SURCHARGE LOADS THAT INCLUDED IN THIS CALCULATION IS 5kPa or 10 kPa
 - THE FINAL SURFACE GRADIENT ABOVE THE WALL IS LEVEL OR ONLY SLIGHT (LESS THAN 1 VERTICAL RISE IN 10 HORIZONTAL)
 - THE WALLS BACKFILL IS FREE DRAINING CONSISTING OF SAND &/OR GRAVEL
 - ALL SUB-SURFACE WATER IS DRAINED BY MEANS OF AN AGRICULTURAL DRAIN, OR OTHER SUITABLE METHOD.
 - SLEEPERS ARE HANDLED WITH DUE CARE DURING TRANSPORTATION AND ERECTION
 - SLEEPER MINIMUM END BEARING LENGTH SHALL NOT BE LESS THAN 25mm EACH END

For more information visit
sunsetsleepers.com.au

72 Officer S Rd,
OFFICER VIC 3809

Phone	0410 818 242
Email	info@sunsetsleepers.com.au
Facebook	facebook.com/sunsetsleepers
Web	www.sunsetsleepers.com.au

