



Concrete Sleepers

Engineering Certificate (3000mm Long)

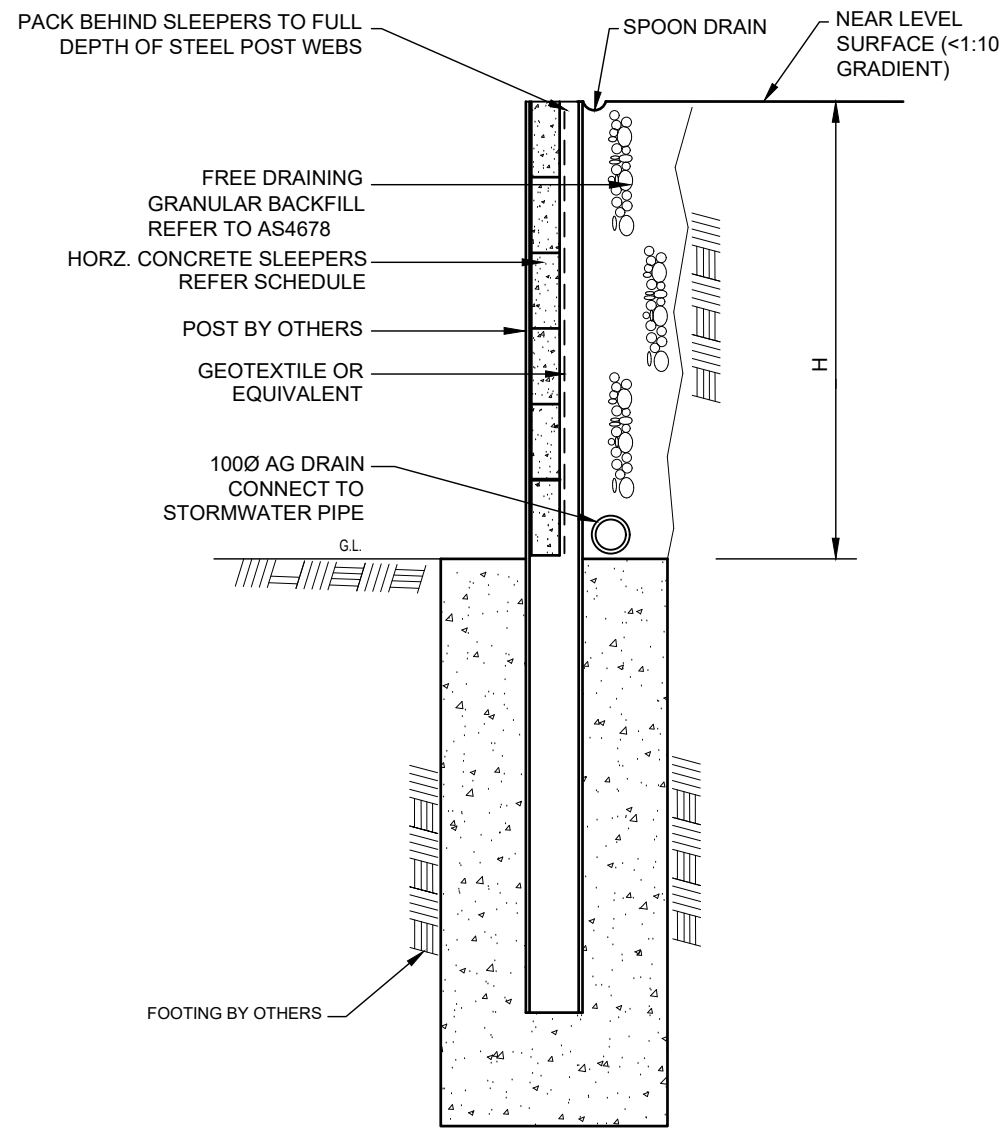
ABN 23 646 746 027

72 Officer S Rd,
Officer VIC 3809

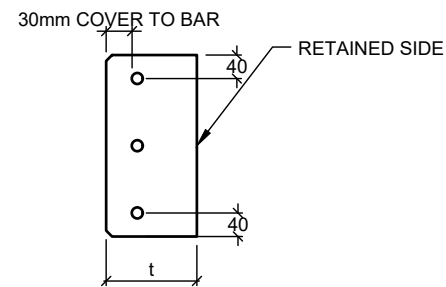
+61 410 818 242

info@sunsetsleepers.com.au

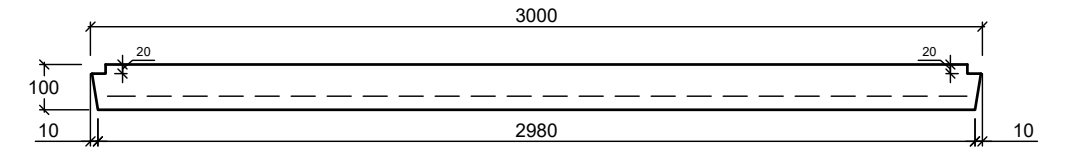
www.SunsetSleepers.com.au



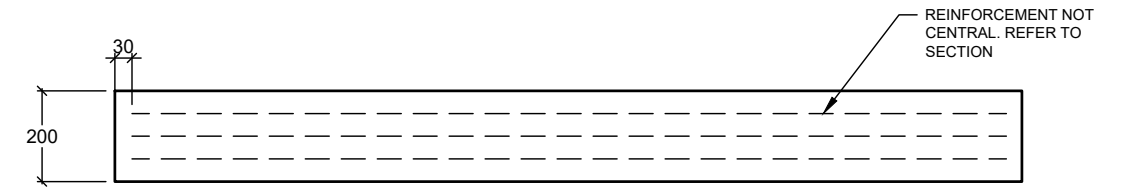
TYPICAL SLEEPER RETAINING WALL DETAIL



SECTION VIEW



PLAN VIEW



ELEVATION VIEW

REINFORCEMENT TYPES

TYPE A	EITHER: 3/N12 OR 3/12mm GFRP (60GPa)
TYPE B	EITHER: 2/N12 OR 2/12mm GFRP (60GPa)

SLEEPER SIZE =3000 LONG X 200mm DEEP

WALL TYPE	THICKNESS (t)	REINFORCEMENT	SOIL RETAINED (H) 5KPa	SOIL RETAINED (H) 10KPa
3000-100-A	100mm	TYPE A	2.8m	2.5m
3000-100-B	100mm	TYPE B	2.5m	2.0m

ASSUMED SOIL PROPERTIES

SOIL DENSITY (kN/m ³)	18
Ka	0.3
C (kPa)	5

SPECIFICATIONS:

- SLEEPER CONCRETE GRADE TO BE N40. CASTING EACH SLEEPER REQUIRES RIGID FORMWORK AND CONCRETE COMPACTION IN ACCORDANCE WITH AS3600
- THESE SLEEPER WALLS SPECIFICATIONS ARE ONLY SUITABLE FOR USE WITH RETAINING WALLS WHICH SATISFY THE FOLLOWING CONDITIONS:
 - THE WALL IS NOT SUBJECT TO HEAVY SURCHARGE LOADS, THE SURCHARGE LOADS THAT INCLUDED IN THIS CALCULATION IS 5kPa or 10 kPa
 - THE FINAL SURFACE GRADIENT ABOVE THE WALL IS LEVEL OR ONLY SLIGHT (LESS THAN 1 VERTICAL RISE IN 10 HORIZONTAL)
 - THE WALLS BACKFILL IS FREE DRAINING CONSISTING OF SAND &/OR GRAVEL
 - ALL SUB-SURFACE WATER IS DRAINED BY MEANS OF AN AGRICULTURAL DRAIN, OR OTHER SUITABLE METHOD.
 - SLEEPERS ARE HANDLED WITH DUE CARE DURING TRANSPORTATION AND ERECTION
 - SLEEPER MINIMUM END BEARING LENGTH SHALL NOT BE LESS THAN 25mm EACH END

For more information visit
sunsetsleepers.com.au

72 Officer S Rd,
OFFICER VIC 3809

Phone	0410 818 242
Email	info@sunsetsleepers.com.au
Facebook	facebook.com/sunsetsleepers
Web	www.sunsetsleepers.com.au

